



Strengthening Child-Friendly and Women-Friendly Gram Panchayats in PESA Blocks: A Writeshop Report



April 2025

Contents

i. Executive Summary	
ii. List of Abbreviations	
1. Introduction	7
1.1 What is Child-Friendly and Women-Friendly Gram Panchayat?	7
1.2 Why is it important?	7
1.3 National and State Policy Priority	7
1.4 Indicators for Action.....	8
2. Strategic Collaborations	9
3. Background	9
4. Approach Adopted	11
4.1 Methodology.....	11
4.2 Deliberations and Solutions.....	12
5. Way Forward	16
Annexures	18

Annexure 1: Participant composition for Writeshop

Annexure 2: PAI: State-wise Number of GPs in each Grade

Annexure 3: Theme-wise Locsl Indicator Framework for PAI Round II

Core Technical Team

Shri **Dr. Mallinath Kalshetty**, DDG YASHADA & Director SIRD; **Dr. R. V. Pole**, Writeshop Course Director; Advocate **Sanjay Sengar**, Member – MSCPCR; **Dr. Devika Deshmukh**, Specialist – Urban & SPSP-OIC, UNICEF; Mr. **Sandeep Tendolkar**, WASH Expert; Mr. **Rajiv Wankhede**, Consultant, CB&SQM (SOEPR - NIRDPR), SIRD YASHADA; Ms. **Sonali Mukherjee**, SBC Specialist, UNICEF; Mr. **Govind Beniwal**, Child Protection Officer, UNICEF; **Vaishnavi Iyer**, Consultant SPSP; Resource Persons – **Christo George**; **Subodh Tayade**; **Dr. Sonu Meher**, Health Expert

Special Acknowledgement

Shri **K. S. Futane**, Dy. Commissioner - Development, Nagpur Division; Shri **Dahifale**, Chandrapur Forest Academy of Administration, Development & Management; Shri **Girish Dhaigude**, Project Director, DRDA, Chandrapur; Adv. **Kshama Dharmapurivar** Chairman, CWC, Chandrapur

List of Abbreviations

ASHA – Accredited Social Health Activist
BDO – Block Development Officer
CWC – Child Welfare Committee
CSR – Corporate Social Responsibility
DRDA – District Rural Development Agency
CFGP – Child-Friendly Gram Panchayat
FRA – Forest Rights Act
GP – Gram Panchayat
MGNREGA – Mahatma Gandhi National Rural Employment Guarantee Act
MFP – Minor Forest Produce
MoPR – Ministry of Panchayati Raj
MSCPCR – Maharashtra State Commission for Protection of Child Rights
MSRLM – Maharashtra State Rural Livelihoods Mission
NIRD– National Institute of Rural Development
PAI – Panchayat Advancement Index
PESA – Panchayats Extension to Scheduled Areas
PRI – Panchayati Raj Institution
PS – Panchayat Samiti
RDD – Rural Development Department
RGSA – Rashtriya Gram Swaraj Abhiyan
SDG – Sustainable Development Goals
SHG – Self-Help Group
SIRD – State Institute of Rural Development
SITAN – Situational Analysis
TDD – Tribal Development Department
TSP – Tribal Sub-Plan
WASH – Water, Sanitation and Hygiene
WFGP – Women-Friendly Gram Panchayat

Executive Summary

This report provides a comprehensive overview of two pivotal Writeshops jointly organized by **YASHADA Pune** and **UNICEF Maharashtra**. The key objective of the initiative was to institutionalize *Child-Friendly Gram Panchayats (CFGP)* and *Women-Friendly Gram Panchayats (WFGP)* in PESA (Panchayats Extension to Scheduled Areas) regions of Maharashtra, with an emphasis on local governance, SDG contextualization, and community-led planning.

The participatory two-day Writeshop, held in two batches in Pune and Chandrapur, respectively, engaged key **Block Development Officers and Gram Panchayat officials** from PESA regions, along with expert facilitators to analyze local challenges and co-develop actionable strategies to ensure local governance is child and gender sensitive. The report details the workshops' **participatory approach**, the framework of **action plans developed** to prioritize women's and children's well-being, and the **strategic way forward** for implementing integrated programming at the grassroots level, ultimately contributing to more holistic and equitable rural development.

Each block assessed its performance using the Panchayat Advancement Index (PAI), identified low-scoring GPs, while also sharing regional success stories. Key insights emphasised the value of community-driven planning, inclusive Gram Sabha deliberations, and systematic integration of child and women's priorities into local governance.

Across sectors of health, nutrition, education, WASH, and social protection, stakeholders pinpointed common barriers: superstition-related health risks, limited NGO/CSR engagement, language gaps in schools, inadequate sanitation, scarce local livelihood opportunities, and administrative bottlenecks. Building on strategic collaboration between YASHADA and UNICEF, the report advocates for enhanced partnerships in health, education, and livelihoods, alongside strengthened engagement of the Child Welfare Protection Committee, Self-Help Groups, Mahila Sabhas, and Bal Sabhas to enhance community ownership.

Way Forward

Each block will select selected pilot Gram Panchayats to implement targeted interventions, allocate required resources, and bolster Bal Sabhas and Mahila Sabhas. YASHADA and UNICEF will continue to provide technical support and monitor PAI scores, with the goal of scaling proven models across all PESA blocks to achieve lasting improvements in women's empowerment and child well-being.



Strengthening Child-Friendly and Women-Friendly Gram Panchayats in PESA Blocks: A Writeshop Report

1. Introduction

1.1 What is a Child-Friendly and Women-Friendly Gram Panchayat?

SDG localization – i.e., adapting and implementing the global Sustainable Development Goals (SDGs) at the local level – envisions that local communities and stakeholders participate in grassroots governance to drive holistic development. Child-Friendly Gram Panchayat (CFGP) and Women-Friendly Gram Panchayat (WFGP) are decentralized local governance models – CFGP integrates a child-centric approach by prioritizing child rights, participation, and well-being in decision-making processes; similarly, the WFGP framework is designed to advance gender equality and women’s empowerment by fostering inclusive governance, enhancing women’s participation, and promoting gender-sensitive policies and decision-making. Both CFGP and WFGP are **evolving governance models** that require **systematic institutionalization** for effective implementation.

1.2 Why is it important?

While several initiatives have been undertaken at both the national and state levels to orient Panchayati Raj Institution (PRI) functionaries and stakeholders on CFGP and WFGP implementation, there remains a need to **streamline GP activities, strengthen local institutional capacities**, and ensure the **sustained adoption of these approaches**.

The Government of Maharashtra, YASHADA, and UNICEF, in the past, have focused on capacity-building efforts in this direction. However, it is critical that PRIs translate these learnings into informed, context-specific, and evidence-based action plans that align with local needs and priorities.

1.3 National and State Policy Priority

The Ministry of Panchayati Raj (MoPR) has launched the Panchayat Advancement Index (PAI) — a transformative tool, by localizing SDGs, is designed to measure the progress of over 2.5 lakh Gram Panchayats (GPs) across India. CFGP and WFGP are recognized as two of the nine themes (referred to as *Nav-ratnas*)¹ in the PAI. The PAI is compiled of 566 unique data points across these nine themes. The baseline report capturing Panchayats’ performance (overall and theme-wise) of Localized SDGs for 2022-23 was launched in April 2025.

Based on the PAI scores & thematic Scores achieved by different Gram Panchayats, these GPs are grouped into one of the categories of performance – Achiever: (90+), Front Runner: (75 to below 90); Performer: (60 to below 75); Aspirant: (40 to below 60) and Beginners (below 40). As per overall PAI scores, **Maharashtra** has about 44% (12,242) of its participating GPs in the Performer category, and 54% (14,944) in the Aspirant category; 8 GPs are Front Runners and 461 GPs are Beginners (Source: Panchayat Advancement Index (PAI) Report, 2022–23, Ministry of Panchayati Raj, Government of India).

¹ Nine themes are Poverty-Free and Enhanced Livelihoods in Panchayat, Healthy Panchayat, Child-Friendly Panchayat, Water-Sufficient Panchayat, Clean and Green Panchayat, Panchayat with Self-Sufficient Infrastructure, Socially Just and Socially Secured Panchayat, Panchayat with Good Governance and Women-Friendly Panchayat. These themes align global goals with rural realities, helping local governments tailor their strategies for holistic development.

Table 1: State-wise Distribution of Gram Panchayats by Category

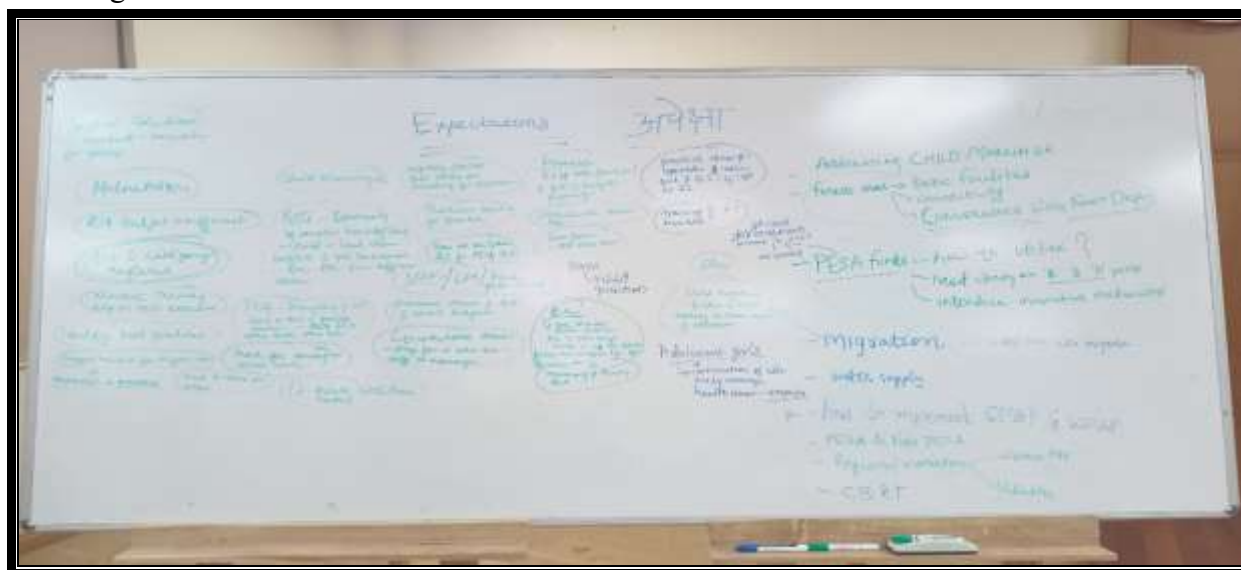
State	Total GPs	Data Received	A+ (Achiever)	A (Front Runner)	B (Performer)	C (Aspirant)	D (Beginner)
Gujarat	14,618	14,618	None	346	13,781	491	None
Telangana	12,768	12,768	None	270	10,099	2,390	9
Tripura	1,176	1,176	None	42	728	406	None
Maharashtra	27,849	27,655	None	8	12,242	14,944	461
Uttar Pradesh	57,702	23,207	None	4	6,593	15,373	1,237
Chhattisgarh	11,643	11,643	None	None	1,239	8,955	1,449
Haryana	6,223	6,223	None	None	339	5,071	813
Jharkhand	4,297	4,291	None	None	375	3,229	677
Kerala	941	941	None	8	902	31	None
Overall India	2,55,699	2,16,285	None	699	77,298	1,32,392	5,896

Refer to Annexure 2 for summarized data of all States/UTs.

1.4 Indicators for Action

In order to equip and support Block Development Officers (BDOs) and Block Panchayat officials to drive change at the GP level toward strengthening CFGP and WFGP, the existing indicator framework developed by MoPR for the PAI is taken into consideration. CFGP (Theme 3: “Child-Friendly Panchayat”) and WFGP (Theme 9: “Women-Friendly Panchayat”) are two of the nine themes in PAI. A total of **132 indicators** are aligned to both themes — **87 indicators** have been mapped to Theme 3 and **45 indicators** to Theme 9.

By analyzing the PAI scores, Panchayats can identify key areas impacting children (health, education, nutrition, safety, etc.), prioritize actions, and allocate resources effectively. The PAI can serve as a valuable framework for **initiating steps to institutionalize** child-friendly and women-friendly gram panchayats at the local level by specifying the action-oriented step at each level, starting from the Gram Sabha. This data-driven approach, combined with active child participation, community engagement, and capacity building, can guide Panchayats towards creating a more supportive and nurturing environment for women and children.



2. Strategic Collaborations

Yashwantrao Chavan Academy of Development Administration (YASHADA) and UNICEF Maharashtra, in close collaboration, are supporting the Government's agenda on strengthening Child-Friendly and Women-Friendly Gram Panchayats across Maharashtra. This joint effort underscores the shared commitment to the well-being and empowerment of women and children at the grassroots level.

This collaborative effort is strategically directed towards PESA (Panchayats Extension to Scheduled Areas) Blocks to ensure a concentrated impact in these most vulnerable regions, thereby establishing a strong foundation for broader, equitable development planning. This crucial initiative also benefits from the involvement and expertise of key stakeholders, including the **Hon. Governor's Office**, the **Planning Department**, the **Rural Development Department (RDD)**, and the **Tribal Development Department (TDD)** of Maharashtra, ensuring a multi-faceted approach to strengthening local governance for children and women in these specific areas.

3. Background

In Maharashtra, the devolution of 5% TSP funds to PESA Gram Panchayats was implemented in 2,877 PESA Gram Panchayats, distributed in 59 blocks of 13 districts. A 2016 study commissioned by TDD to assess the preparedness of the PESA Gram Panchayats and Gram Sabhas to effectively utilize the devolved TSP funds highlighted the need to focus on 3 areas: capacity building, advocacy, and planning of all stakeholders.

In 2024, UNICEF supported the Planning Department and DES on a **longitudinal study (2016-23)** on the devolved PESA budgets. The study assessed the utilization of the 5% TSP budget devolved to PESA Gram Panchayats, examining utilization patterns, challenges encountered, and the benefits accrued to the community over the period of 2015-16 to 2022-23. One of the key recommendations was the need for detailed planning and developing a sustained operational plan for optimal utilization of PESA and other budgets at the GP level. Most of the funds were used for physical infrastructure like roads, borewells for drinking water, Anganwadi/ school room construction, and their repairs, thus drawing attention to the real needs of the GPs. Further, given the ground-level and contextual complexities, utilization of PESA budgets under the four defined categories is not straightforward, especially when stakeholders such as the Forest Department play a role in FRA-related matters.

YASHADA, and UNICEF together have designed a writeshop to enable BDOs and GP officials to identify key local issues, prioritize actions, and develop practical solutions. This initiative will be supported through continued facilitation and technical guidance by YASHADA and UNICEF. The aim is to establish a sustainable strategy for addressing marginalized communities, particularly women's and children's issues, starting with PESA GPs.



**Group Activity in progress –
(Lower panel, L-R: Districts Yavatmal, Gadchiroli, Amravati)**



**Orientation to Block Officials at YASHADA, Pune
(led by YASHADA and UNICEF)**

4. Approach Adopted

This section provides an overview of the approach adopted, beginning with the methodology and the process followed both prior to and during the writeshop, and then outlining the key deliberations and solutions that emerged.

A **two-day immersive “writeshop”** was designed to facilitate collaborative engagement and enable block-level planning based on the current data available for each block. The **objective** of the writeshop was to develop a block-level Child-Friendly and Women-Friendly Gram Panchayat (CFGP & WFGP) Strategy for effective planning and execution in the GPs.

4.1 Methodology

The writeshop brought together key stakeholders—**BDOs of PESA Blocks, PESA Coordinators, Gram Panchayat Officers, and experts.**

The writeshop is conducted in two batches – **Batch I: Vidarbha and Marathwada Region** (for 25 PESA blocks in districts Nanded, Amravati, Gadchiroli, Chandrapur and Yavatmal) and **Batch II: Konkan, Nashik & Pune Region** (for 34 PESA blocks in districts Thane, Palghar, Nashik, Dhule, Jalgaon, Nandurbar, Ahilya Nagar, and Pune).

(Please refer to [Annexure 1](#) for participant composition in the Writeshops.)

Process adopted:

Before Writeshop

1. A virtual meeting of the participants was organized by YASHADA to orient them on the purpose of the writeshop.
2. A Situational Analysis (SITAN) template was shared with BDOs. The PAI scores of GPs for 7 out of 9 themes were considered (2 themes of Self-Sufficient Infrastructure and Good Governance were excluded). For each theme, BDOs sorted Gram Panchayats in the block based on their PAI scores as High (100–80), Mid (80–50), and Low (50–0).
3. The SITAN format also captured key demographic and socio-economic indicators, existing government schemes and interventions, good practices, and current gaps in service delivery or any challenges faced.
4. The SITAN allowed the BDOs to capture the current status of women and children within the Gram Panchayats, including ongoing initiatives, challenges, and opportunities.

During Writeshop

1. For the Chandrapur batch, the writeshop was inaugurated in the presence of Shri Dr. M. Kalshetty, DDG - SIRD, YASHADA; Shri K. S. Futane, Dy. Commissioner - Development, Nagpur Division; Shri Dahifale, Chandrapur Forest Academy of Administration, Development & Management; Shri. Girish Dhaigude, Project Director, DRDA, Chandrapur; Adv. Kshama Dharmapurivar Chairman, CWC, Chandrapur; UNICEF Representative Dr.

Devika Deshmukh, Specialist – Urban & SPSP & YASHADA Faculty Dr. R. V. Pole, Writeshop Course Director.

For the Pune batch, Shri Dr. M. Kalshetty (DDG - SIRD, YASHADA) inaugurated the Writeshop, orienting participants on holistic development via SDG localization. Expert insights on building rights-based Child and Women-Friendly Gram Panchayats were shared by Adv. Sanjay Sengar (MSCPCR Member), complemented by technical guidance from UNICEF's Dr. Devika Deshmukh, Ms. Sonali Mukherjee, and Mr. Govind Beniwal, under the course direction of YASHADA's Dr. R. V. Pole.

2. Participants were asked to share their expectations from the writeshop in the context of rural realities faced at the grassroots.
3. DDG-SIRD, YASHADA conducted an orientation session on Localization of SDGs and importance of PAI in the context of strengthening child-friendly and women-friendly GPs.
4. Participants were distributed in groups as per district and deliberated based on the pre-prepared SITAN. Each group reviewed their block's Panchayat Advancement Index (PAI) scores across thematic areas.²
5. The discussions focused on identifying key issues and challenges in the lower-scoring Gram Panchayats and formulating strategies to bring them on par with better-performing ones. This participatory approach enabled the creation of contextualised and need-based block-level strategies.

4.2 Deliberations and Solutions

The following section outlines the issues raised by participants based on their SITANs, along with the solutions proposed. The BDOs plan to implement the strategies developed during the writeshop and will follow up accordingly to improve the PDI scores of their GPs.

² The SITAN and discussions were structured around

- **Health & Nutrition** - Theme 2: Healthy Panchayat, Theme 9: Women-Friendly Panchayat
- **Social Protection / Social Security** - Theme 1: Poverty-Free Panchayat, Theme 7: Socially Secured Panchayat
- **Child Protection and Education** - Theme 3: Child-Friendly Panchayat
- **Water, Sanitation and Hygiene (WASH)** - Theme 4: Water-Sufficient Panchayat, Theme 5: Clean and Green Panchayat

Glimpses from the Writeshop



L: Inaugural session; R: Concluding session



Orientation session in progress

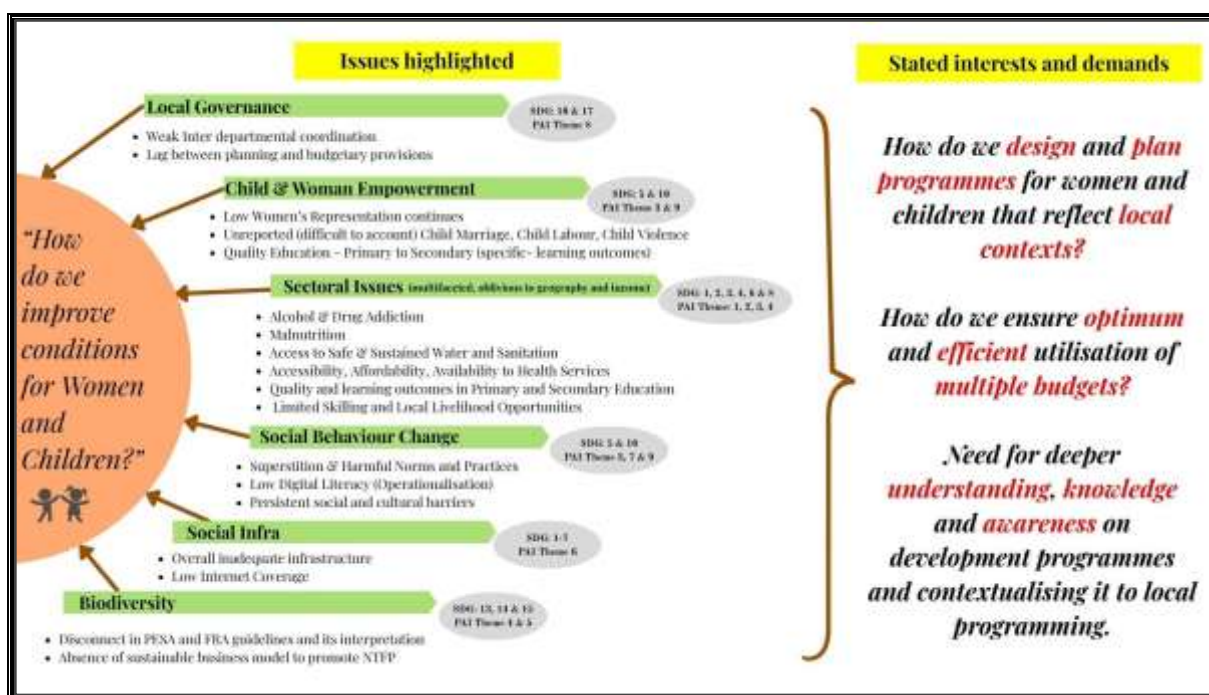


Group presentations (L-R): Districts – Nanded, Gadchiroli, Amravati, Chandrapur

Table 2: Sector-wise challenges and solutions emerging from the Writeshop

Sector	Challenges	Solutions
Health & Nutrition	<ul style="list-style-type: none"> ● Low involvement of NGOs and CSRs in Health ● High rates of death among children aged 0-5 due to Superstition ● Low Birth Weight ● High rates of Anemia ● Non-tribal officers/staff face resistance from locals ● Household-level personal health and hygiene ● Insufficient healthcare facilities 	<ul style="list-style-type: none"> ● Encourage corporates to reinvest profits from the block into local health initiatives through CSR. ● Expand health facility coverage to ensure timely doctor visits for children. ● Weekly monitoring by ASHA ● 100% Institutional delivery ● Providing necessary instruments to Anganwadis e.g., weighing machines, stadiometer ● Set up a Nutrigarden at every Anganwadi and inform parents to improve access to safe, nutritious food ● Health camps for women & children, with a focus on adolescent girls. ● Continuous capacity building of frontline workers (ASHA, ANM, Anganwadi sevika) to address malnutrition.
Social Protection / Social Security	<ul style="list-style-type: none"> ● Income from Minor Forest Produce (MFP) is low due to lack of bargaining power. ● Farmers struggle to raise capital individually for irrigation. ● Need for increased MGNREGA jobs ● Challenges with money lenders ● High seasonal migration ● Low market leverage for SHGs ● Limited digital banking knowledge among women ● Domestic violence ● Adult illiteracy ● Persistence of superstition ● Limited youth employment opportunities ● Delayed scheme implementation and administrative bottlenecks ● Unreliable daily electricity supply ● Migration issues 	<ul style="list-style-type: none"> ● Set up MFP collection centres and inform farmers to boost bargaining power and prices. ● Develop community irrigation facilities to increase farm output without high individual costs through MGNREGA. ● Requirement of Skill development Training. ● Financial literacy programmes. ● Link SHGs with MSRLM, MGNREGA, and various market-based livelihood opportunities (e.g. tailoring, flour milling, papad making, Soya processing, livestock rearing).
Child Protection, Education	<ul style="list-style-type: none"> ● Teacher-to-classroom ratio is low ● Existing language barrier between children and teachers due to the use of different dialects and the medium of instruction ● High prevalence of child marriage ● High prevalence of child labour ● High prevalence of School Dropout ● Low attendance among girl students ● Children's issues not adequately addressed in Gram Sabha ● Schools inaccessible for students with special needs/ disabilities. 	<ul style="list-style-type: none"> ● Activate and empower Village Child Protection Committees (VCPCs) ● Institutionalize Bal Sabhas and Mahila Sabhas ● Expand <i>Fulora</i> programme - activity-based learning to engage students in an interactive way ● Strengthen Dr APJ Abdul Kalam Amrut Aahar Yojana and develop a comprehensive nutrition strategy to address malnutrition ● Setting up toy libraries in Anganwadi, with learning materials like puzzles, scientific

Sector	Challenges	Solutions
	<ul style="list-style-type: none"> Insufficient support for competitive exam preparation. 	<ul style="list-style-type: none"> toys, etc. Installation of Sanitary pad and its disposal machines in school Mobilising CSR funds to create child friendly gardens/spaces. Recruitment of local teachers
WASH	<ul style="list-style-type: none"> Poor water conservation plans and mechanisms, resulting in low groundwater levels Low water & sanitation literacy Low functional toilets Non-functional toilets in schools Insufficient drinking water in schools Reluctance to use available toilets Shortage of drinking water and irrigation facilities 	<ul style="list-style-type: none"> Encourage and felicitate community-based water conservation strategies Majhi Vasundhara scheme is highly appreciated as it encourages good practices of water and environment conservation by monetary rewards. Therefore, there is more demand for such schemes. Construct sanitation facilities using MGNREGA Local advocacy plan required for water and environment conservation practices Handwashing stations at Anganwadis and schools.



The points raised by the participants help us understand ground-level challenges and priorities. The responses highlight a range of interlinked issues and demands that reflect the complexity of local contexts.

unicef
for every child

यशवंतराव चव्हाण विकास प्रशासन प्रबोधिनी (यशदा), पुणे अंतर्गत
“युनिसेफ पुरस्कृत पेसा क्षेत्रातील अधिकारी यांची राज्यस्तरीय निवासी कार्यशाळा”



चंद्रपूर वन प्रशासन, विकास व व्यवस्थापन प्रबोधिनी, चंद्रपूर
दि. ०७/०४/२०२५ ते ०८/०४/२०२५

यशवंतराव चव्हाण विकास प्रशासन प्रबोधिनी (यशदा), पुणे अंतर्गत
unicef युनिसेफ पुरस्कृत पेसा क्षेत्रातील अधिकारी यांची राज्यस्तरीय निवासी कार्यशाळा



MDC, यशवंतराव चव्हाण विकास प्रशासन प्रबोधिनी (यशदा), पुणे
दिनांक १६/०४/२०२५ ते १७/०४/२०२५

5. Way Forward

Post the writeshops, the following activities will be undertaken –

1. Blocks that participated in the writeshop will identify 10 GPs from each of the blocks to strategize, plan, and execute **targeted interventions** as per the needs of the block.
2. These plans will **allocate resources** required for the targeted interventions, which include PESA as well as other resources received by the GP
3. Blocks will **strengthen Bal Sabhas and Mahila Sabhas** by regularly involving both women and children.
4. UNICEF and YASHADA will provide **strategic guidance and monitor PAI scores** to track progress and facilitate improvements in lower-performing GPs.

Takeaway from the Writeshop:

BDOs were asked to share what is the one area they wish to address on priority for their block: In summary, **women's health, child nutrition, child protection** (preventing child marriages), **education**, and **clean-&-green** village emerged as recurring themes. The photo below provides a glimpse of the BDOs' priority development areas.



Annexures

Annexure 1: Participant composition for Writeshop

- **Participant composition for Writeshop Batch I (Vidarbha and Marathwada region)**

Participating Blocks: Kinwat, Mahur (Dist: Nanded); Chikhaldara, Dharni (Dist: Amravati); Maregaon, Ralegaon, Kelapur, Arni, Ghatanji, Pandharkarda, Zari Jamni (Dist: Yavatmal); Rajura, Korpana, Jivti (Dist: Chandrapur); and Bhamragad, Korchi, Gadchiroli, Desaiganj (Dist: Gadchiroli)

Designation	No. of participants	Organization / Affiliation	Rank/ Grade
Dy. Commissioner	1	Government officer	Group A /Class I
Project Director	1	Government officer	Group A /Class I
Block Development Officers (BDOs) PS Arni Dist Yavatmal PS Zari Jamni Dist Yavatmal PS Bhamragad Dist Gadchiroli PS Korchi Dist Gadchiroli PS Ralegaon Dist Yavatmal PS Maregaon Dist Yavatmal PS Pandharkawada Dist Yavatmal PS Ghatanji Dist Yavatmal PS Korpana Dist Chandrapur PS Chikhaldara Dist Amravati PS Dharni Dist Amravati PS Rajura Dist Chandrapur	13	Government officer	Group A /Class I
Asst. BDOs PS Gadchiroli Dist Gadchiroli PS Kinwat Dist Nanded PS Umred Dist Nagpur	3	Government officer	Group B / Class II
District PESA Coordinator	4		
Gram Panchayat Officer	9	Government officer	Group C/ Class III
RGSA Coordinator District	1		
PESA Block Manager	1		
Technical Experts / Facilitators	14	GoM, YASHADA, UNICEF	
Total Participants of which Male of which Female	47 41 06		

No. of Blocks that did not participate: 08 (PS Etapalli, Sironcha, Aheri, Dhanora, Kurkheda, Mulchera, Chamorshi, Armor – Dist Gadchiroli)

- **Participant composition for Writeshop Batch II (Konkan, Nashik & Pune Region)**

Participating Blocks: Shahapur, Bhiwandi, Murbad (Dist: Thane); Wada (Dist: Palghar); Nashik (Dist: Nashik); Sakri, Shirpur (Dist: Dhule); Chopda, Yawal, Raver (Dist: Jalgaon); Akole (Dist: Ahilyanagar); Junnar, Ambegaon (Dist: Pune); Navapur, Aakrani, Shahada, Akkalkuva (Dist: Nandurbar)

Designation	No. of participants	Organization / Affiliation	Rank/ Grade
Block Development Officers (BDOs) Murbad, Thane Sakri, Dhule Aakrani, Nandurbar	4	Government officer	Group A /Class I
Asst. BDOs Chopda, Jalgaon Yaval, Jalgaon Raver, Jalgaon	5	Government officer	Group B / Class II
Education officer	2		
Medical Officer	7		
Gram Panchayat Officer	8	Government officer	Group C/ Class III
Extension Officer	4		
Pesa Coordinator	8		
NIRD PR	1		
Technical Experts / Facilitators	10	GoM, YASHADA, UNICEF,	
Total Participants	49		
of which Male	43		
of which Female	06		

No. of Blocks that did not participate: 17 (PS Dahanu, Talasari, Mokhada, Jawhar, Palghar, Vasai, Vikramgad – Dist Palghar; PS Peth, Surgana, Kalvan, Trimbakeshwar, Dindori, Igatpuri, Devlai, Baglan – Dist Nashik; Nandurbar, Taloda – Dist Nandurbar)

Annexure 2: PAI: State-wise Number of GPs in each Grade

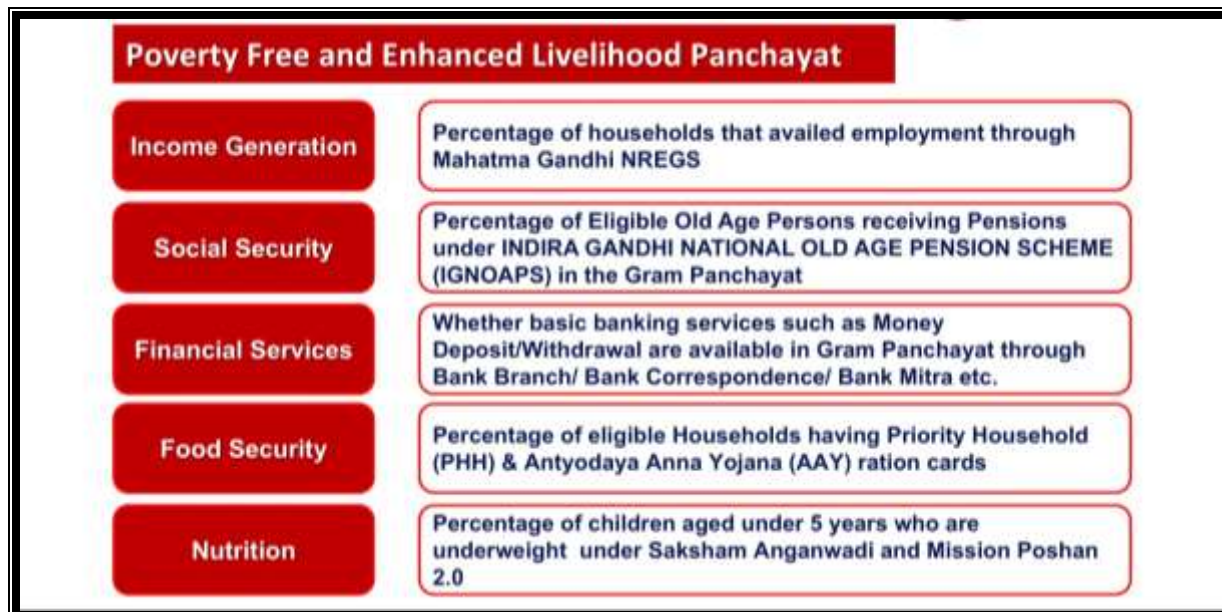
Panchayat Advancement Index – State-wise number of Gram Panchayats in each Grade

Table: State wise number of Gram Panchayats in each Grade								
Sl. No.	State/UT	Total No of GPs	No of GPs Submitted Data*	Grade				
				A+	A	B	C	D
1	Andaman and Nicobar Islands	70	70			14	55	1
2	Andhra Pradesh	13310	13310		4	5372	7830	104
3	Arunachal Pradesh	2108	2108			63	1968	77
4	Assam	2194	2183		1	1084	1097	1
5	Bihar	8053	8053			810	7148	95
6	Chhattisgarh	11643	11643			1239	8955	1449
7	Gujarat	14618	14618		346	13781	491	
8	Haryana	6223	6223			339	5071	813
9	Himachal Pradesh	3468	3328		1	673	2647	7
10	Jammu & Kashmir	4291	4291		2	1520	2746	23
11	Jharkhand	4297	4281			375	3229	677
12	Karnataka	5921	5907			1644	4245	18
13	Kerala	941	941		8	902	31	
14	Ladakh	193	193			82	111	
15	Lakshadweep	10	10			4	6	
16	Madhya Pradesh	23011	23011			7912	14942	157
17	Maharashtra	27849	27655		8	12242	14944	461
18	Manipur	3222	1976			11	1741	224
19	Mizoram	834	834			86	731	17
20	Odisha	6794	6794		1	2865	3882	46
21	Punjab	13239	10514			548	9784	182
22	Rajasthan	11207	10634			1580	8876	178
23	Sikkim	199	199			145	54	
24	Tamil Nadu	12525	12525			5557	6880	88
25	Telangana	12768	12768		270	10099	2390	9
26	Dadra & Nagar Haveli & Daman & Diu	38	38		12	8	18	
27	Tripura	1176	1176		42	728	406	
28	Uttar Pradesh	57702	23207		4	6593	15373	1237
29	Uttarakhand	7795	7795			1022	6741	32
	Total	255699	216285		699	77298	132392	5896
No of GPs whose Data has been submitted on PAI portal after validation by State*								

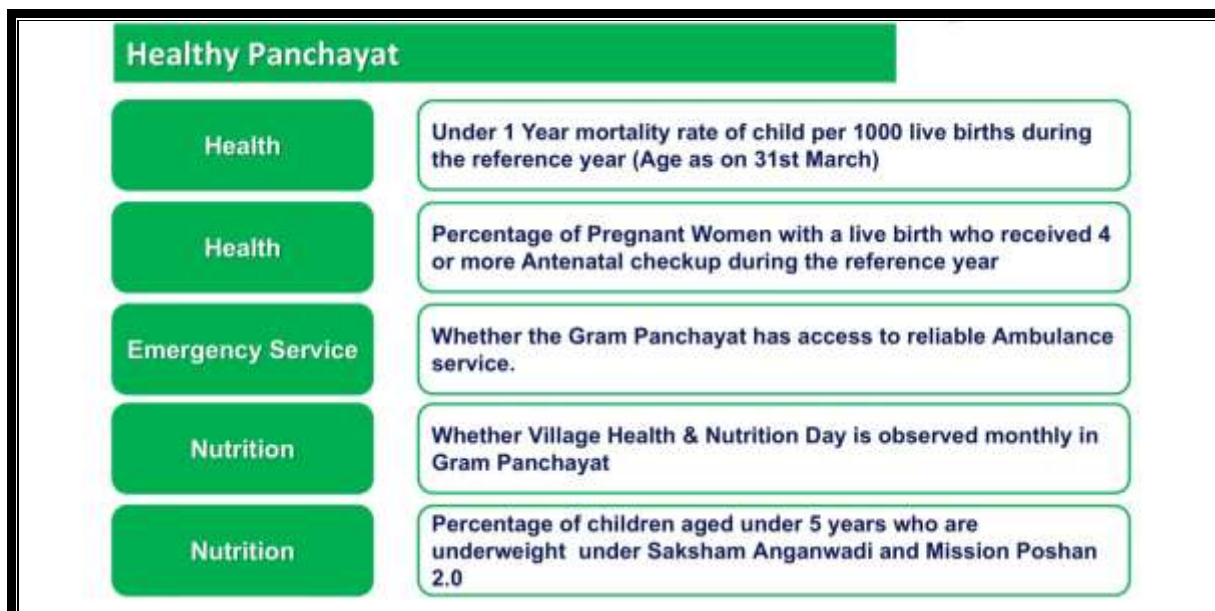
Source: Panchayat Advancement Index 2022-23, M/o Panchayati Raj, Govt. of India

Annexure 3: Theme-wise Local Indicator Framework for PAI Round II

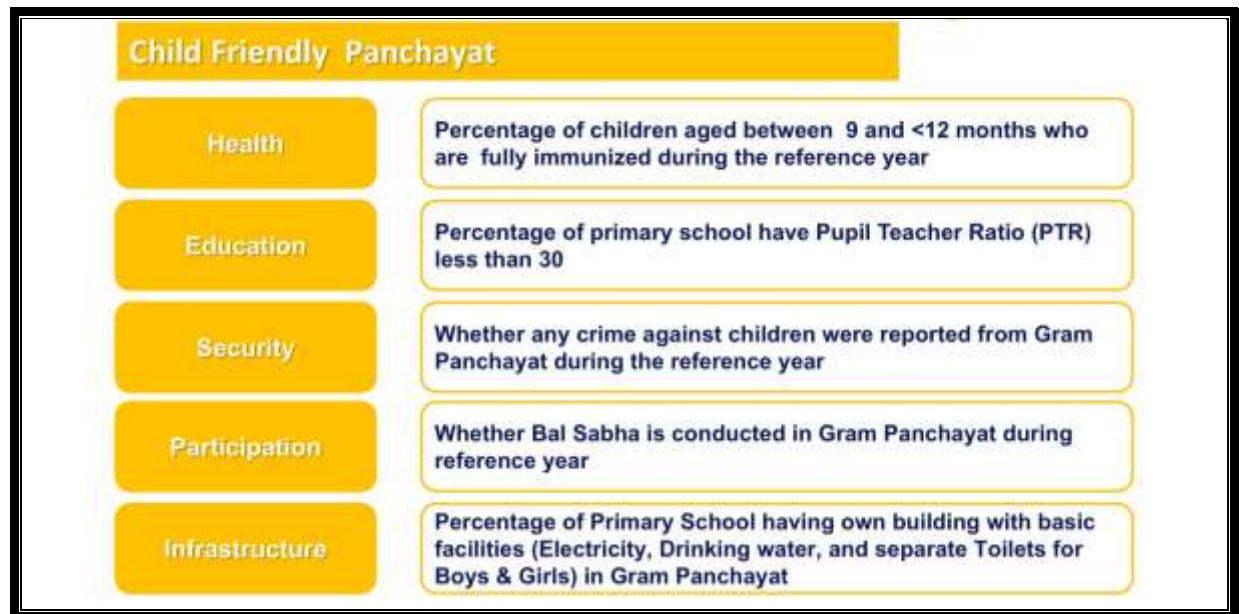
- Local Indicator Framework: Theme 1



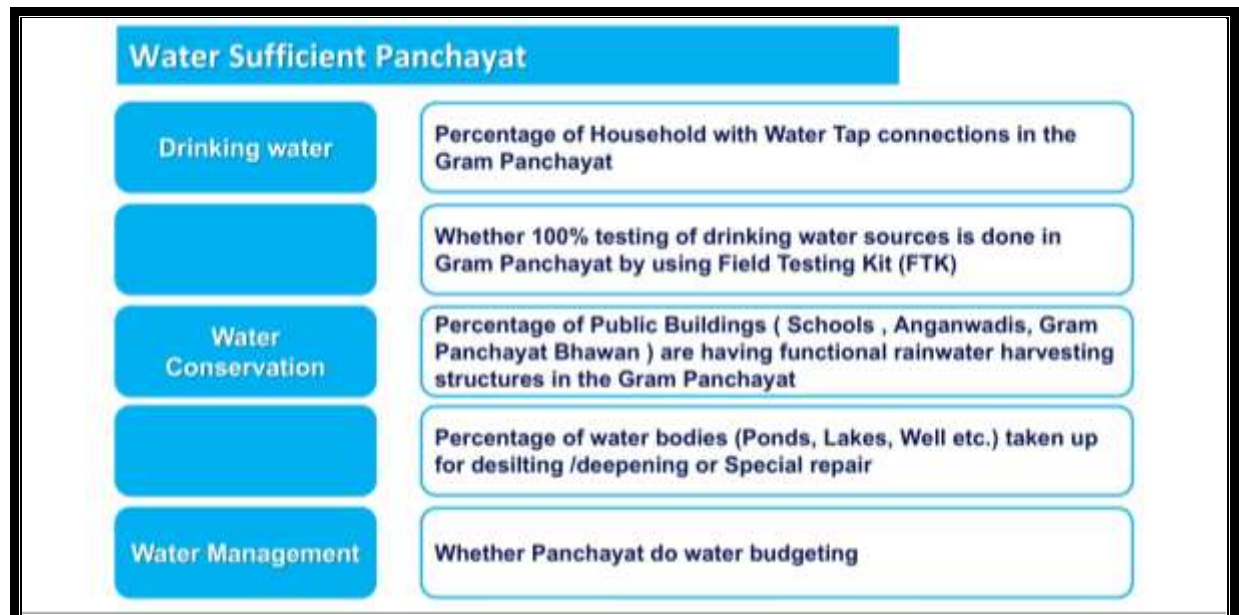
- Local Indicator Framework: Theme 2



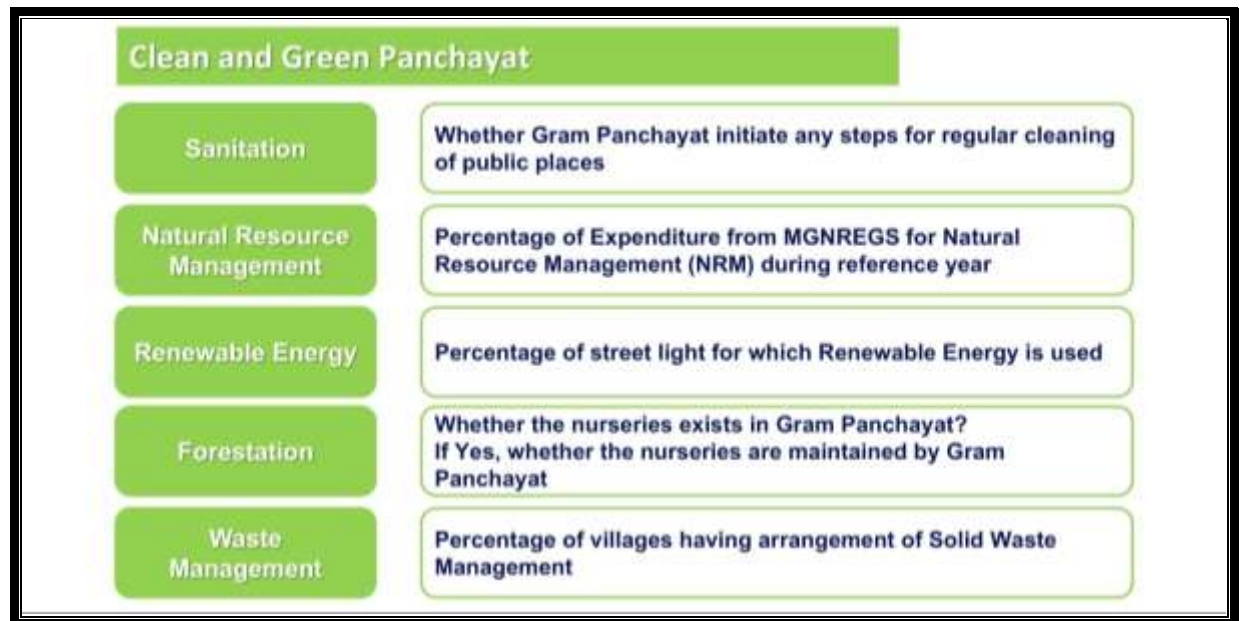
- **Local Indicator Framework: Theme 3**



- **Local Indicator Framework: Theme 4**



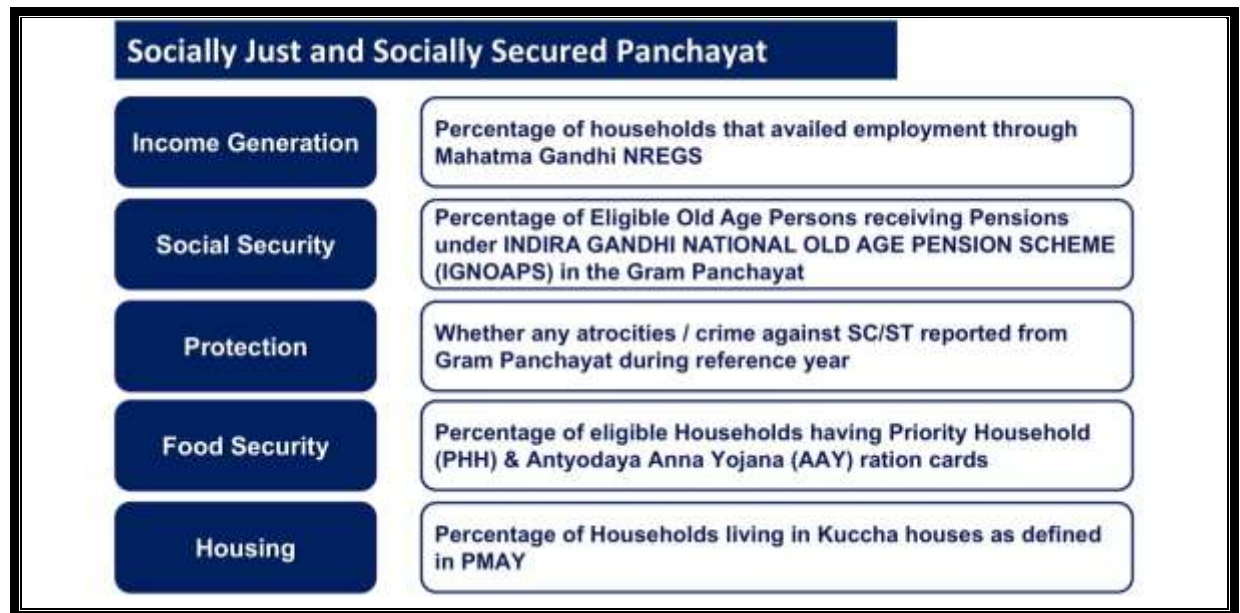
- **Local Indicator Framework: Theme 5**



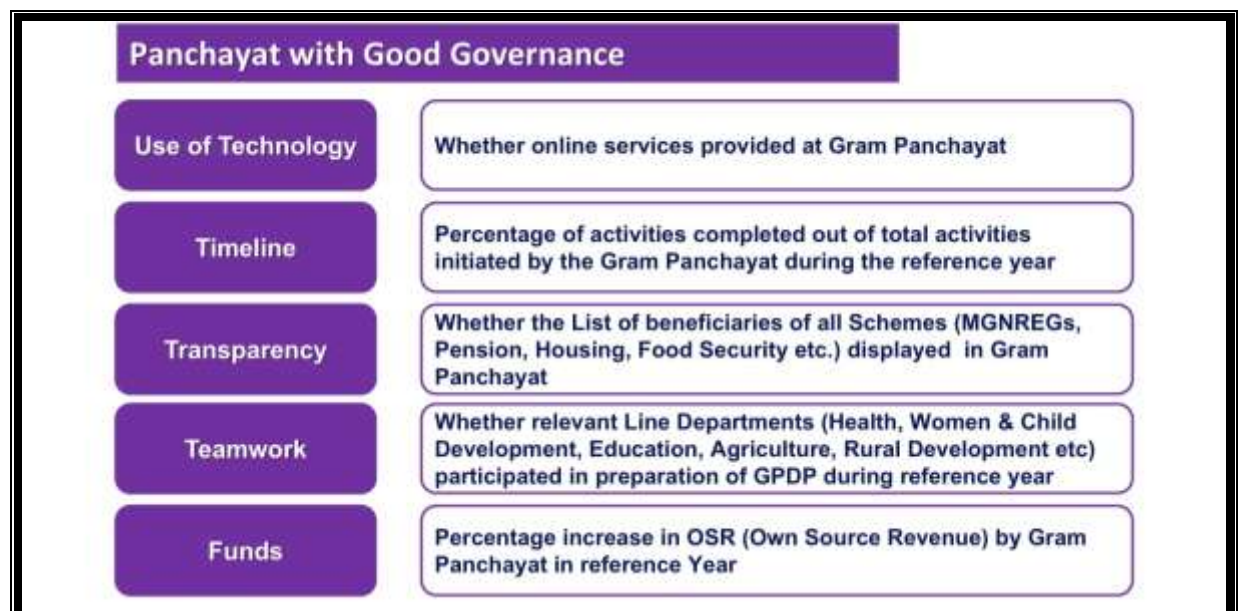
- **Local Indicator Framework: Theme 6**



- **Local Indicator Framework: Theme 7**



- **Local Indicator Framework: Theme 8**



- **Local Indicator Framework: Theme 9**

